



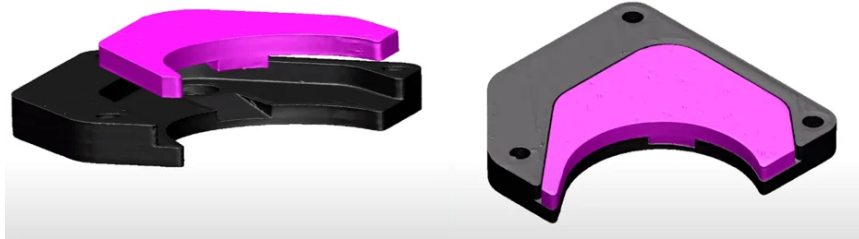
April 2023

## [NEW! Digital Assembly Analysis \(DAA\)](#)

Detect problems in child parts assemblies before they arrive on your dock

Webinar  
Coming in May 2023

To Learn More, [visit our DAA videos](#)



Digitally assemble child parts  
from measurements

Find and fix interferences  
before parts arrive

[LEARN MORE](#) >

## NEW RELEASE COMING in APRIL

Some of the highlights include:

- New commands added for Editing Augmented Features
- Creating Cross-Sections from Point Cloud Colour Maps
- Adding balloon to SOLIDWORKS DIMXPRT PMI
- New command to easily toggle the true probe path on/off.
- CheckMate Now supports the PH20 Flick Mode on a Feature-by-Feature Basis.

Stay in the know by [subscribing to our blog](#). You will be notified of upcoming update information.

## **NEW CMENGINE COMING SOON**

Enhancements and bug fixes for both importing and exporting to:

Calypso

PC-DMIS

DMIS

QIF

**Stay tuned for more information**

**Note: our new phone number 416-945-2553**

### **What Origin's Customers Have to Say**

Just so you know...YOU'RE THE BEST!!! In all my years in this industry (like 30+) I've NEVER had or heard of this level of response and support with software!! And I've been around.

***John C. Morin III***

***G.P.R. Co.***

You are Awesome!!!! You  
Guys always take care of us!!  
Thank You!

***Kevin Romanowski***

***Bucher Hydraulics Inc.***



"Checkmate technical support is superb it is like the search engine "Google". You ask Cecil a question, literally, I receive a reply most of the times in minutes. I really appreciate Checkmate technical support team"

***Riyad Abdel-Ghani***

***Pilkington North America***

## Composite Tolerances Explained

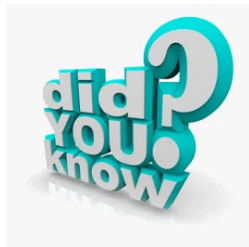
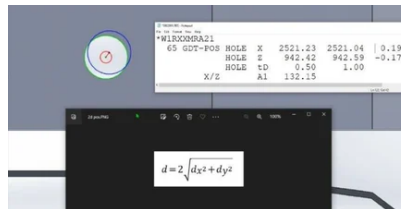
4X $\varnothing$  6.0  $\pm$ 0.025

$\varnothing$	$\varnothing$ .020 (M)	C	E (M)	F (M)
	$\varnothing$ .010 (M)	C		

## DRF Mobility Introduced

$\varnothing$	$\varnothing$ 0.1 (M)	A	B (M)	C (M)
---------------	-----------------------	---	-------	-------

## Relationship Between Coords and True Position



Origin has removed the customer login from [info.originintl.com](http://info.originintl.com).

The best ways to reach support are:  
email [support@originintl.com](mailto:support@originintl.com)

or call 1-800-420-7361 (416-945-2553)



## Be Up-to-Date

## Get Origin Blogs



If you are using Origin software or are considering it, subscribe to our blogs.

Just click on one of the three blogs below and in the popup window that opens enter your email address...it's that easy

[News/Events](#) | [Tech Tips](#) | [Webinars](#)

Origin International Inc. is focused on providing software solutions and consulting services to world class manufacturers, their suppliers and industry leading metrology solutions providers.

Manufacturers that choose Origin software solutions are industry leaders in innovation, quality and cost effectiveness within the Automotive, Aerospace, Transportation and Consumer Products industries.

If you would like more information, don't hesitate to contact us at 1-800-269-2509.

Sincerely,

*The Origin Team*

Origin International Inc.

[sales@originintl.com](mailto:sales@originintl.com) [support@originintl.com](mailto:support@originintl.com)



Origin International | Incorporated | Richmond Hill, ON L4C 9B8 |

You received this email because you are subscribed to Newsletter from Origin International.  
Update your [email preferences](#) to choose the types of emails you receive.

[Unsubscribe from all future newsletters](#)